



# Native Application Builder (eWideStudio)

Creation Review

24 Jan 2006

Shigeki Moride (proposed project lead)

Fujitsu



# Agenda



- Background
- Architecture
- Functions
- Participation
- Project Goals and Scope
- Overlap with other projects
- Roadmap
- Status

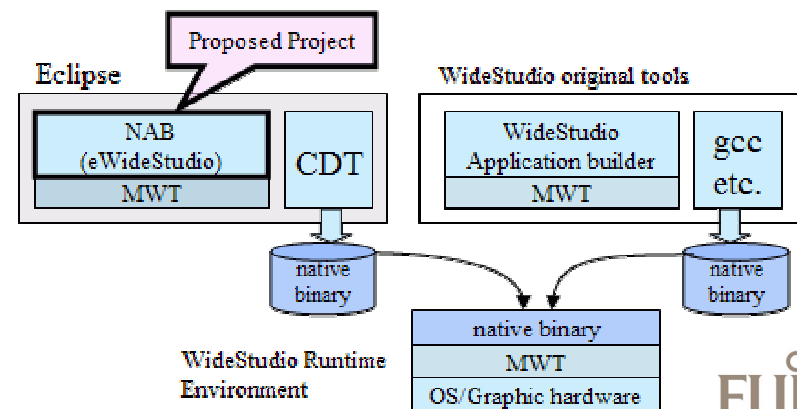


# Background

- NAB was born from WideStudio/MWT
  - Open source software of multi-platform GUI tools.
  - For making a desktop GUI application on a PC.
  - For building and running GUIs on embedded devices.
- WideStudio/MWT is composed by 2 part,
  - Visual GUI application builder (like as a VE),
  - Multi-platform GUI library (MWT: Multiplatform Widget Toolkit).
- Light weight / Variety parts
  - GUI parts: simple buttons to complex tree list.
  - non-GUI parts: event handling, threading/synchronization, Client-Server functions
- Source code interchangeability
  - Win32, Linux/X-window, ITron...

Supported Platforms of MWT
X11
Linux + DirectFB
Linux /dev/fb
mu-CLinux /dev/fb
ZAURUS (Frame Buffer)
Windows 95/98/Me/NT/2000/XP
WindowsCE
MacOSX native
Standard T-Engine ARM / SH / MIPS(T-Shell)
Standard T-Engine ARM / SH / MIPS(FrameBuffer)
ITRON (Frame Buffer)
BTRON/Cho-Kanji

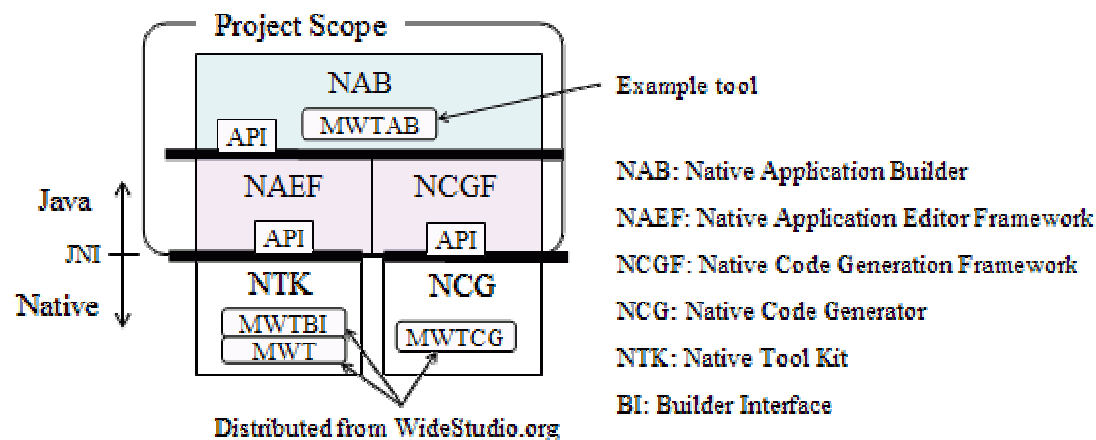
NAB started at WideStudio/MWT.  
But it aim for an extensible framework  
for various tools.



# Architecture

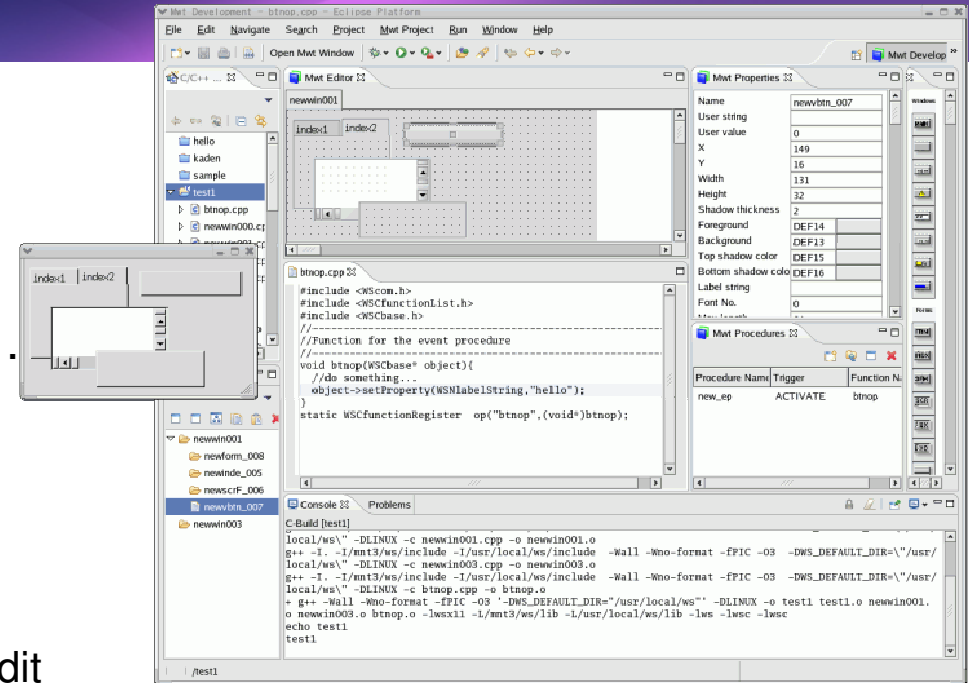


- "Framework and example Tool" model.
  - NAEF (Native Application Editor Framework)
    - Application visual editing framework
    - Built on the NTK (Native Tool Kit).
  - NCGF (Native Code Generation Framework).
    - Source code generation framework
    - Cooperate with NAEF for driving a NCG (Native Code Generator).
  - NAB (Native Application Builder)
    - MWTAB (MWT Application builder) as example.



# Functions

- Example application MWTAB provides...
  - GUI Edit
    - Like as the VE
    - WYSIWYG GUI editing
    - Edit attribute visually
  - C/C++ Source Code Generation and Edit
    - Automatic event procedure source code generating
    - Edit freely by hand
  - Application Build/Execution
    - Generate executable application
    - Application can be executed in the Eclipse environment.
- MWTAB needs
  - CDT
  - MWT library plug-ins (distributing from WideStudio.org.)



# Participation



- Proposed project lead and initial committers
  - Shigeki Moride, Fujitsu (proposed Project lead)
  - Shun-ichi Hirabayashi, Fujitsu / WideStudio.org Founder
- Interested parties
  - Fujitsu
  - WideStudio Development Team (WideStudio.org)
  - Eclipse Japan Working Group
- Relationship with WideStudio project
  - Proposed committer Mr. Hirabayashi is a founder of WideStudio.
  - Relation of NAB and WideStudio can be kept intimate.
- Developer / User community
  - WideStudio community have a many users and developers.
  - ML have thousands of subscribers from over 20 countries.
  - FTP site counts 800,000 downloads.
  - Expect many users come to NAB.
  - Community will grow up quickly.



# Project Goals and Scope



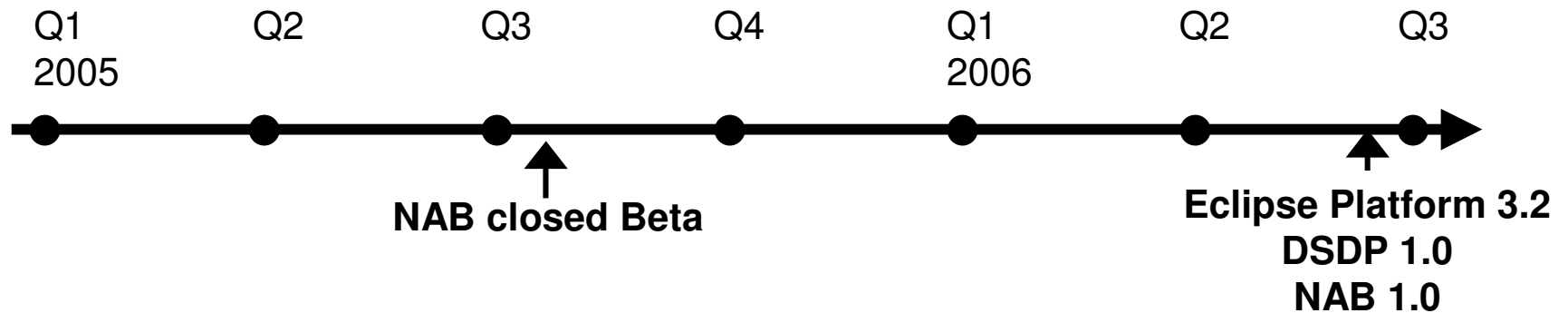
- Started at WideStudio/MWT, but it aim for an extensible framework.
- Future directionality of the project
  - Standard of Cross GUI development platform.
  - Minimal resource devices platform, cooperating with eRCP and others.

## Overlap with other Eclipse Projects

- Feedback embedded cross platform enhancement to CDT.
- Cooperation with eRCP, SWT, AWT.



# Roadmap



**NOTE:** Depending on the nature of the changes in the DSDP project and the NAB.





## Current Status



- Preliminary discussions held with Wind River (2005 5/25)
- NAB closed beta released on (2005 8/24).
- Ready to release almost complete NAB.
- Will have Short Talk at EclipseCon 2006.

