



openMDM[®] eclipse working group

General Assembly

July 7th, 2015

DAIMLER AG, Sindelfingen, Germany

openMDM® EWG membership list



AUDI AG on behalf of Volkswagen Group of America, Inc.
Daimler AG
BMW Group
Mueller-BBM VibroAkustik Systeme GmbH

Driver Member
Driver Member
Driver Member
Driver Member

HighQSoft GmbH

Application Vendor

Bertrandt AG
Canoo Engineering AG
Gigatronic GmbH
itemis AG
Peak Solutions GmbH
Piterion GmbH
Science + computing AG

Service Provider
Service Provider
Service Provider
Service Provider
Service Provider
Service Provider
Service Provider

Tata Motors Ltd.

Strategic User

ASAM e.V.

Guest

DRAFT

openMDM® EWG candidate chart



Membership Class: service provider

As the members of the membership classes have to elect among themselves the representants in the openMDM® EWG steering and quality committees, the chart below contains the respective candidates named by the members.

Company	SC	QC
Bertrandt AG	<will be named>	<will be named>
Canoo Engineering AG	Hans- Dirk Walter	Hans- Dirk Walter
Gigatronic GmbH	Stefan Holz	Sebastian Dirsch
itemis AG	<will be named>	n/n
Peak Solutions GmbH	Dr. Hans- Jörg Kremer	Christian Weyermann
Piterion GmbH	n/n	n/n
Science + computing AG	Dr. Dietmar Rapf	n/n

openMDM® EWG candidate chart



Membership Class: application vendor

As the members of the membership classes have to elect among themselves the representants in the openMDM® EWG steering and quality committees, the chart below contains the respective candidates named by the members.

Company	SC	QC
HighQSoft GmbH	Dr. Ralf Nörenberg	Dr. Ralf Nörenberg

openMDM® EWG candidate chart



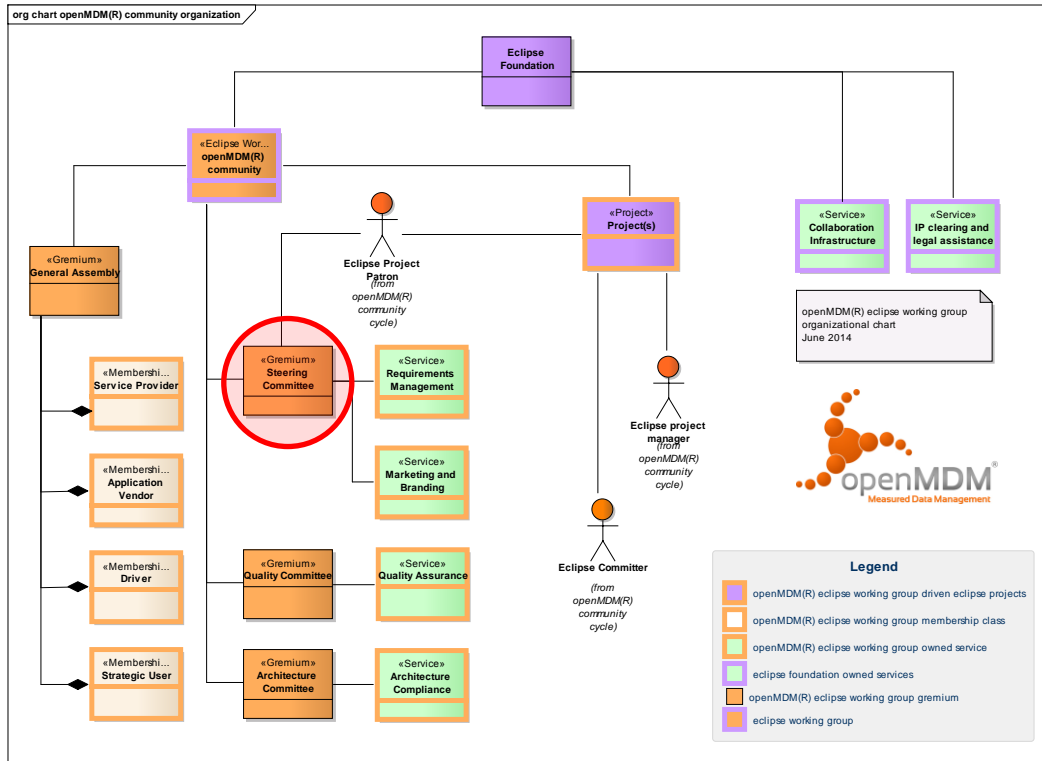
Membership Class: strategic user

As the members of the membership classes have to elect among themselves the representants in the openMDM® EWG steering and quality committees, the chart below contains the respective candidates named by the members.

Company	SC	QC
Tata Motors Ltd.		

DRAFT

openMDM® boards



Composition

Each Driver Member of the WG has a seat in the Steering Committee.
At least one seat is allocated to each class of members different to Driver Members ..

Votes (valid at votings of the gremium, not when establishing it)

Each Driver member on the Steering Committee has three votes. Other Steering Committee members have a single vote.

The Steering Committee - Powers and Duties

The Steering Committee is required to

- Define the strategy of the WG
- Discuss and amend the charter and the participation agreement
- Define and follow marketing and communication activities
- Popularize and defend the openMDM® brand
- Initiate and execute an annual membership checkup
- Define and execute a marketing and branding plan
- Maintain a list of the current members of the openMDM® WG
- Negotiate the annual working group participation fees towards the Eclipse Foundation with the EMO
- WP Assignment, Delivery and Accounting as defined in the section "Collaboration". Decisions on this topic have to be made with a two third majority vote.

steering committee



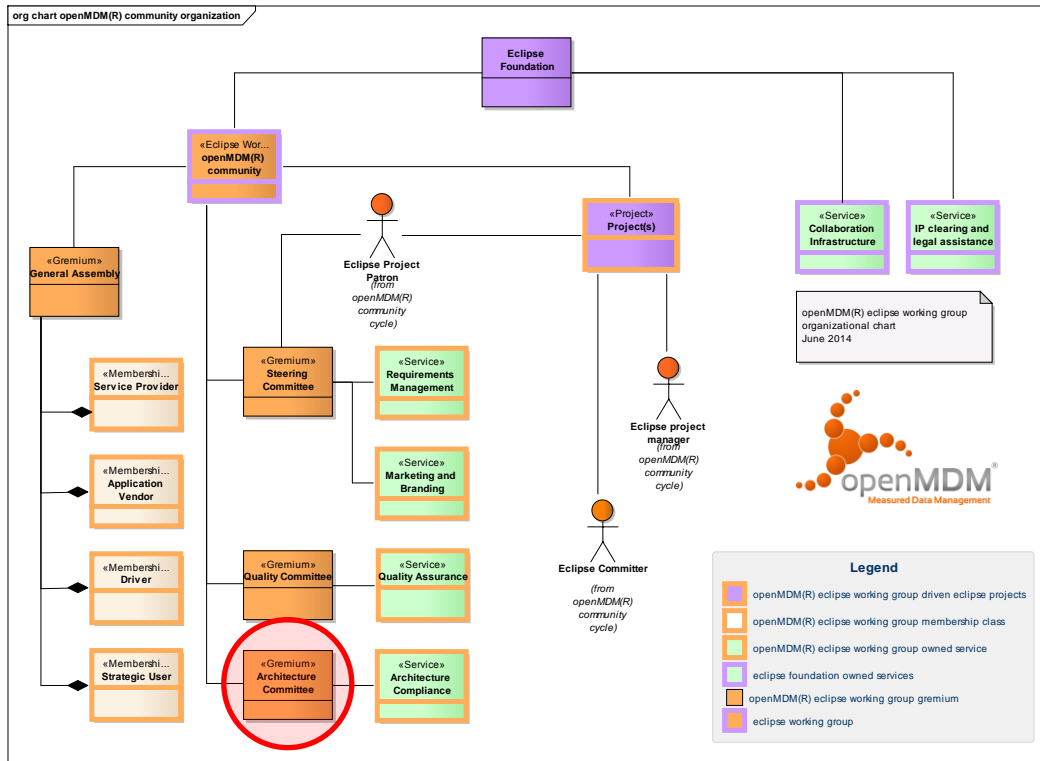
Company	membership class	steering committee
AUDI AG	Driver	Sven Wittig (triple vote)
BMW AG	Driver	Ulrich Bleicher (triple vote)
DAIMLER AG	Driver	Gerwin Mathwig (triple vote)
Mueller-BBM VibroAkustik Systeme GmbH	Driver	Josef Hobelsberger (triple vote)
HighQSoft GmbH	application vendor	Dr. Ralf Nörenberg (single vote)
Tata Motors Ltd.	strategic user	<to be named by Tata Motors Ltd.> (single vote)
Bertrandt AG	service provider	<to be elected by the service providers> (single vote)
Canoo Engineering AG		<to be elected by the service providers> (single vote)
Gigatronic GmbH		
itemis AG		
Peak Solutions GmbH		
Piterion GmbH		
Science + computing AG		

chairman:

<to be elected by the steering committee>

DRAFT

openMDM® boards



Composition

Each Driver Member of the WG has a seat on the Architecture Committee.
Each project lead has a seat on the Architecture Committee.

Votes (valid at votings of the gremium, not when establishing it)

Each member on the Architecture Committee has one vote.

The Architecture committee - Powers and Duties

Architecture Committee members are required to

- Ensure the functional consistency of openMDM® projects
- Ensure the non-functional consistency of openMDM® projects
- Ensure the technical consistency of openMDM® projects
- Evaluate and define technologies to be applied
- Establish technical guidelines
- Validate new project proposals and concepts
- Establish the openMDM® architecture compliance service and ensure its availability to the openMDM® projects

architecture committee



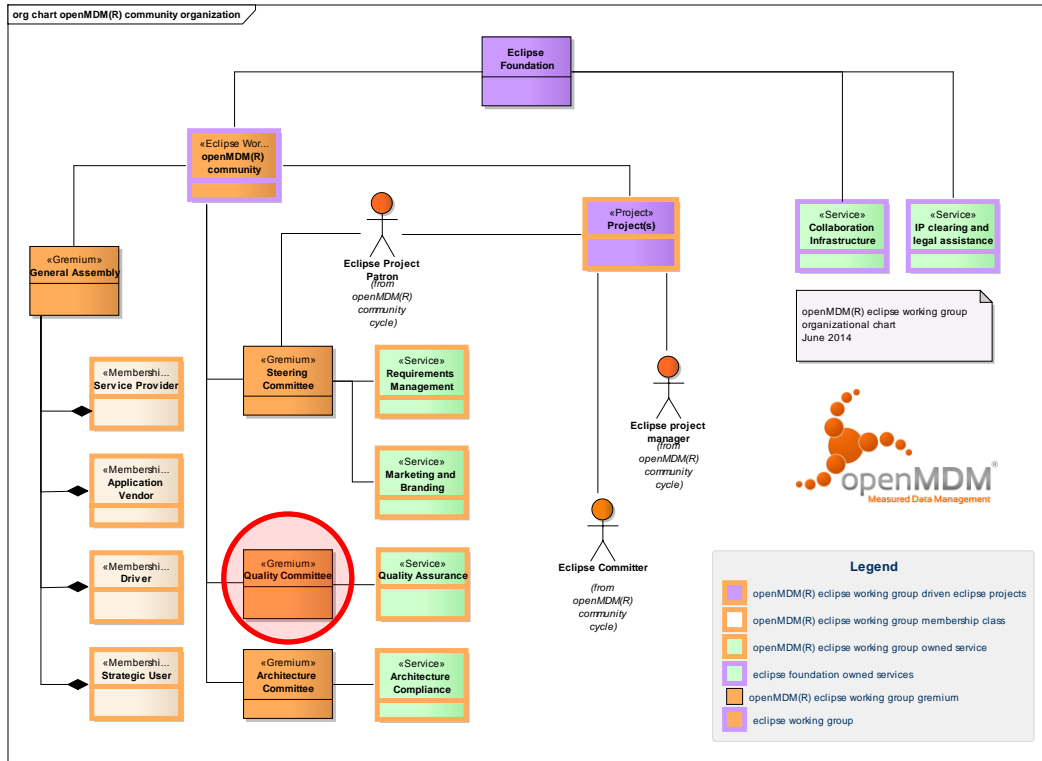
Company	membership class	steering committee
AUDI AG	driver	Christian Rechner
BMW AG	driver	Stefan Ebeling
DAIMLER AG	driver	Andreas Benzinger, ICS AG on behalf of DAIMLER AG
Mueller-BBM VibroAkustik Systeme GmbH	driver	Stefan Wartini
DAIMLER AG	Project lead MDM@WEB, MDM APPS	Gerwin Mathwig
EPOS CAT GmbH	Project lead MDM BL	Stefan Beese

chairman:

<to be elected by the architecture committee>

DRAFT

openMDM® boards



Composition

Each Driver member of the WG has a seat on the Quality Committee.
 Each project lead has a seat on the Quality Committee.
 At least one seat is allocated to each class of members different to Driver members ..

Votes (valid at votings of the gremium, not when establishing it)

Each member on the quality Committee has one vote.

The Quality Committee - Powers and Duties

The Quality Committee members are required to

- Define the WG quality kit and maturity process
- Establish and maintain the openMDM® integration environment
- Establish the openMDM® quality assurance service and ensure its availability to the openMDM® projects
- Provide in-time information to the steering committee on the maturity of the components and results delivered to the community to enable it to decide on the acceptance of a deliverable as valid contribution
- Validate that the projects conform to the WG quality kit.
- Validate that the projects conform to the guidelines established by the architecture committee
- Validate that the projects apply the IP process

quality committee



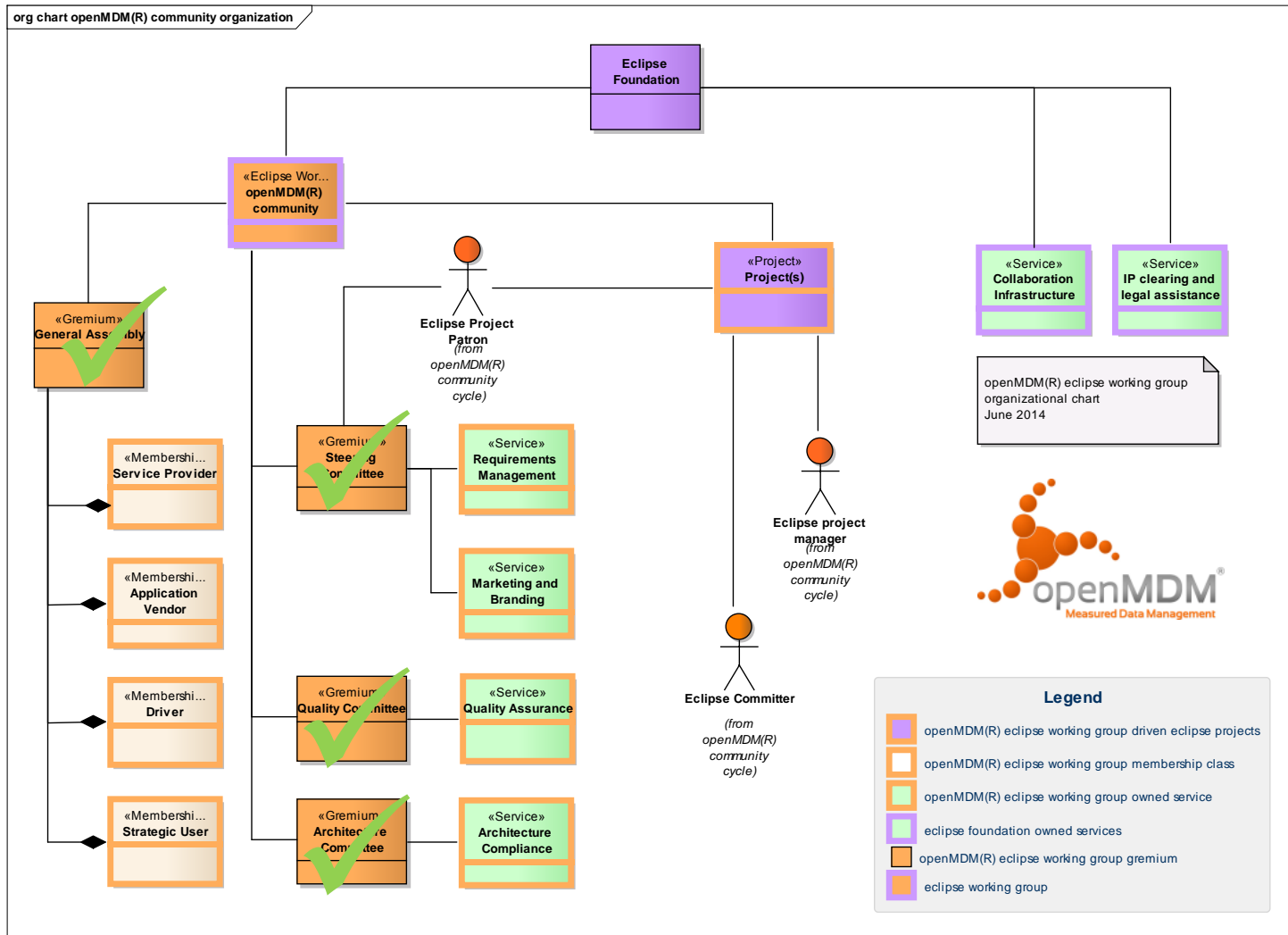
Company	membership class	steering committee
AUDI AG	driver	Sven Wittig
BMW AG	driver	Michael Schwarzbach
DAIMLER AG	driver	Gerwin Mathwig
Mueller-BBM VibroAkustik Systeme GmbH	driver	Christian Grobauer
HighQSoft GmbH	application vendor	Dr. Ralf Nörenberg
Tata Motors Ltd.	strategic user	<to be named by Tata Motors Ltd.>
Bertrandt AG Canoo Engineering AG Gigatronic GmbH itemis AG Peak Solutions GmbH Piterion GmbH Science + computing AG	service provider	<to be elected by the service providers> <to be elected by the service providers>
DAIMLER AG	Project lead MDM@WEB, MDM APPS	Gerwin Mathwig
EPOS CAT GmbH	Project lead MDM BL	Stefan Beese

chairman:

<to be elected by the quality committee>

DRAFT

openMDM® boards

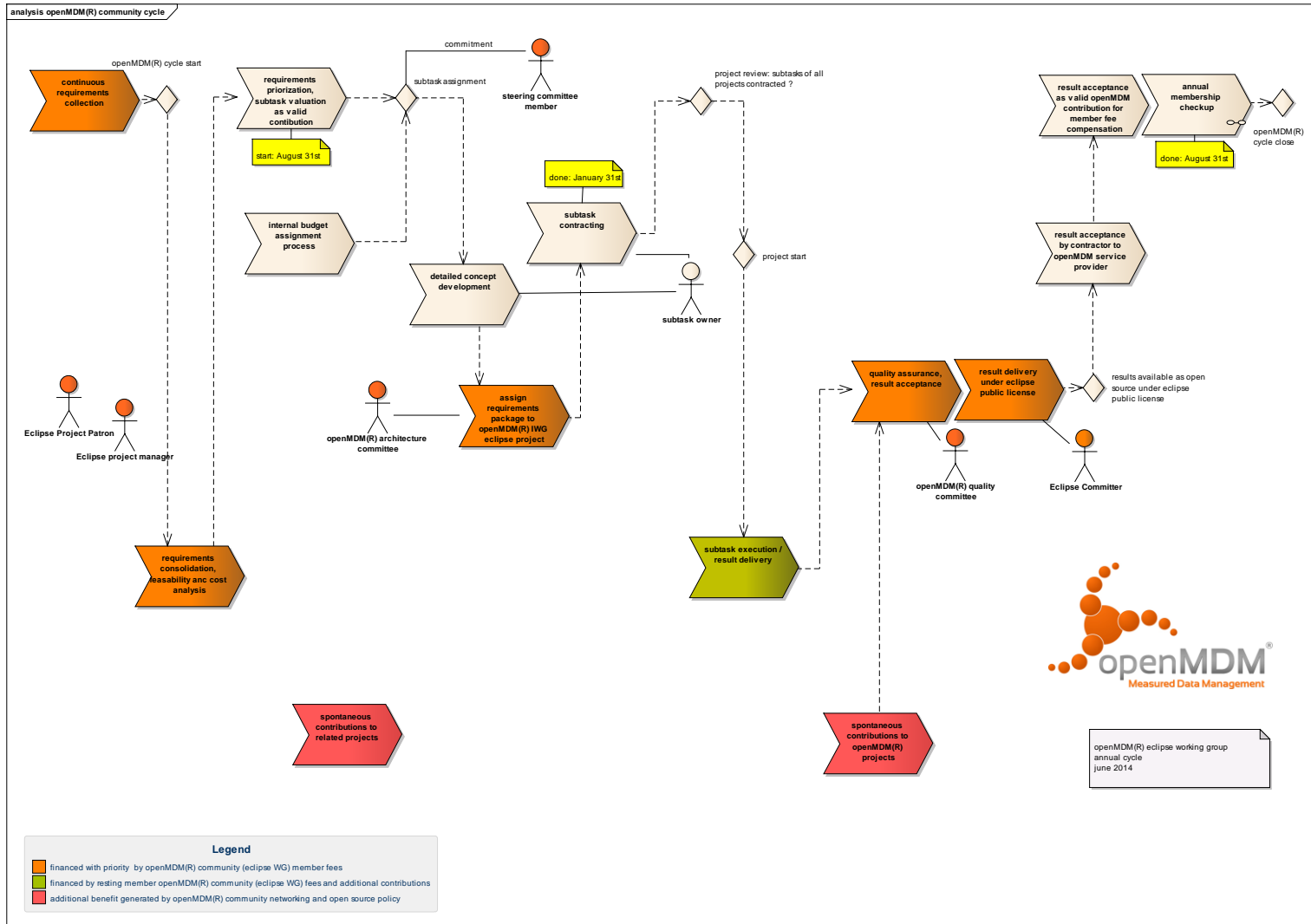


openMDM® community cycle

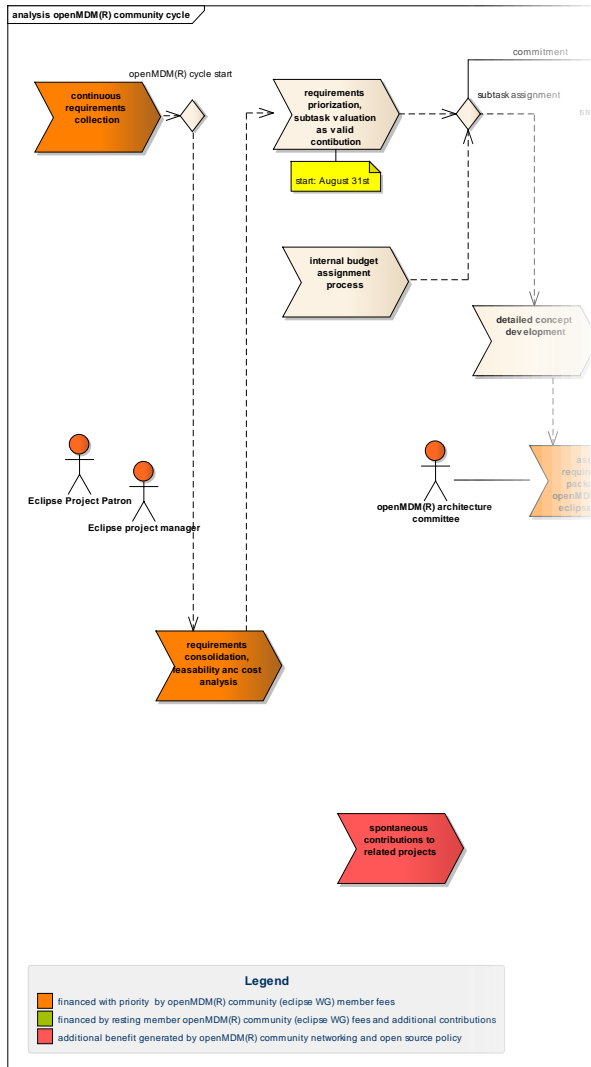


- The openMDM® eclipse working group never does act as an commercial entity. All commercial interactions (ordering, payments etc.) exclusively are carried out by the respective organizational units of the member companies under their full responsibility
- work within openMDM® eclipse working group committees is honorary
- work within openMDM® eclipse working group services is compensated by openMDM® eclipse working group membership fees or additional contributions

openMDM® community cycle



openMDM® community cycle

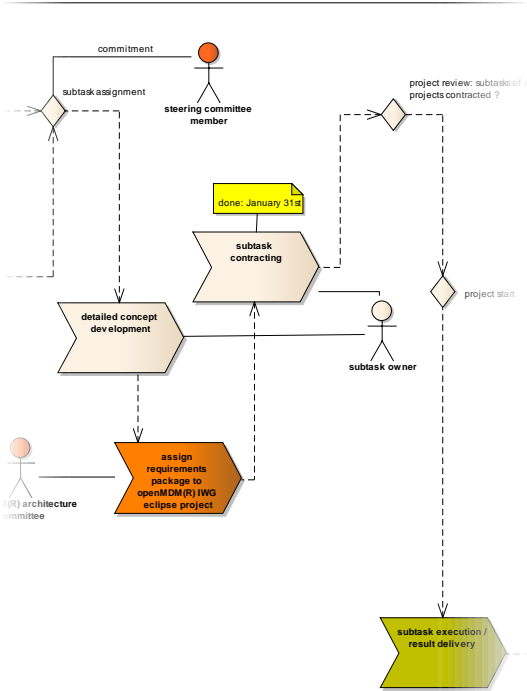


requirements collection
requirements consolidation
requirements packaging

openMDM® community cycle



**task assignment
order placement**

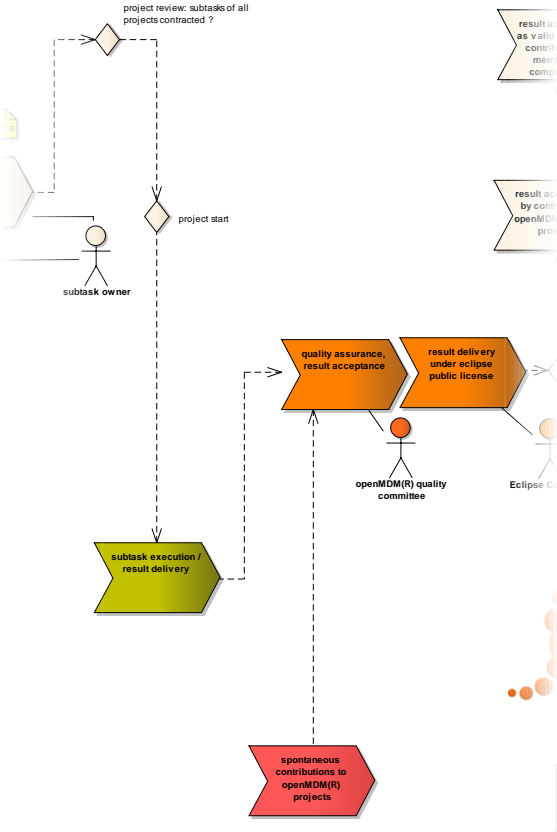


openMDM®
community cycle

openMDM® community cycle



task execution
continuous quality assurance
continuous delivery



openMDM® community cycle



**result acceptance
membership checkup**

