



EEF 0.8 Helios Simultaneous Release

Planned Review Date: 2010-06-11

Communication channel:

<news://news.eclipse.org/eclipse.technology.emft>

Goulwen Le Fur <goulwen.lefur@obeo.fr>



Overview

- Introduction
- Features
- Non-code Aspects
- Testing and Packaging
- Intellectual Properties
- Project Plan

Introduction



- EEF: Extended Editing Framework
- EEF is a generative framework dedicated to the production of advanced user interfaces for EMF model edition
- EEF is a project under the EMFT Project





Features (Runtime)

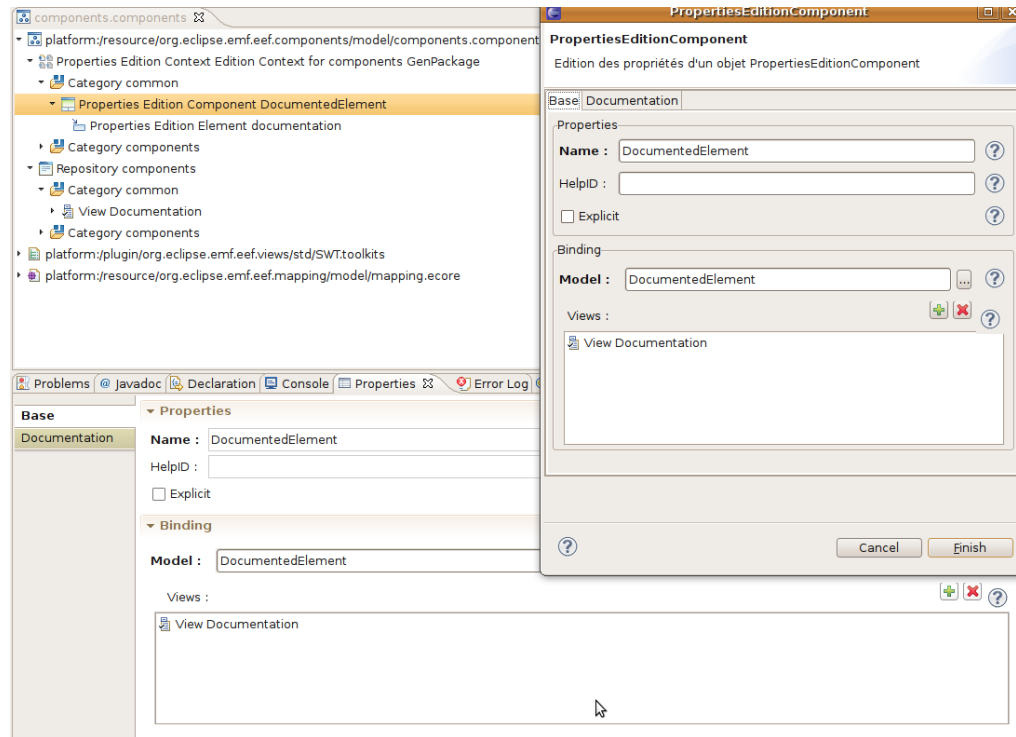
- The EEF runtime provides an extensive architecture for EMF model editing
 - MVC architecture
 - Extensible through extension points

- The EEF runtime contains advanced widgets for EMF objects editing
 - ComboViewers for references
 - Editors for multi-valued attributes
 - ...

Features (EDT)



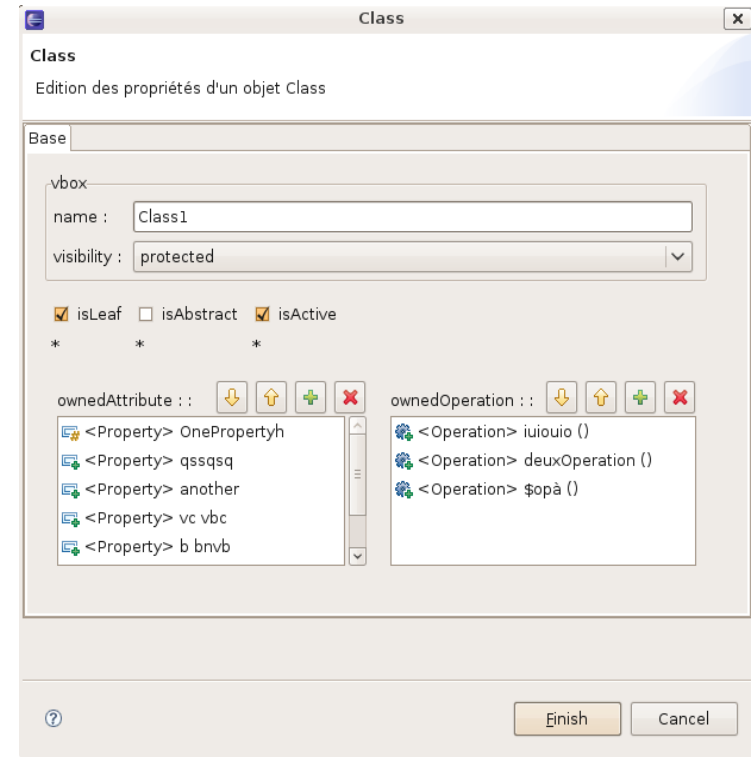
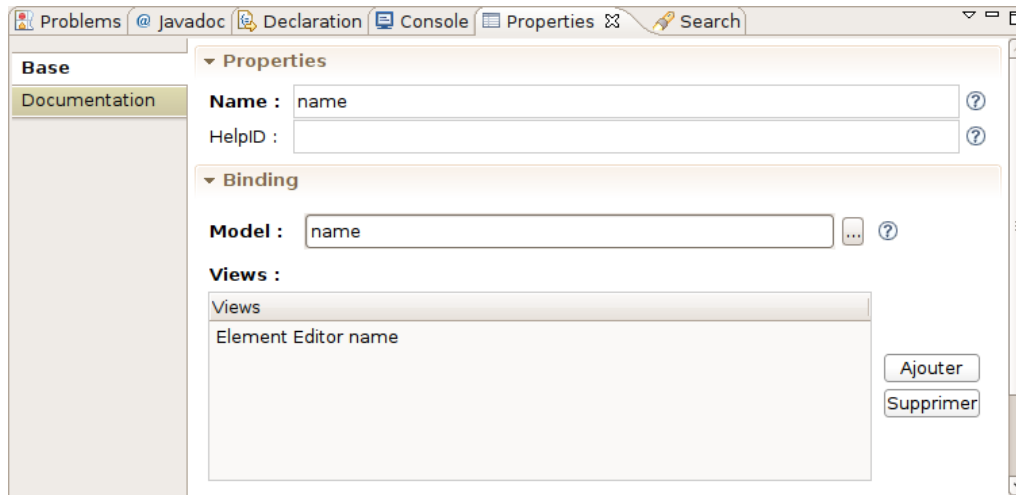
- **EEF Development Tools**
 - EEF uses models to describe UIs
 - The EDT provides editors and wizards to edit these models
 - The EDT also provides standard initializers for default models



Features (EDT)



- **EEF Code generation**
 - EEF generates the code and settings for the UI
 - The code generator is an Acceleo 3.0 module





Non-code aspects

- Wiki-based documentation
 - Installation guide, User guide and Releng guide
 - Quick tutorial for a first generation
 - Allows users to easily discover EEF features

- Help plugin
 - Based on the wiki documentation

- Web site
 - Short description of the EEF project
 - Site included in the EMFT website
 - <http://www.eclipse.org/modeling/emft/?project=eef>



Testing and Packaging

- EEF is built with CBI Athena
- Each new build is tested with Eclipse 3.6, 3.5, 3.4
- EEF is part of the Helios release train since December 2009
- Automated Tests are launched manually after the build
 - Tests will be integrated within the build process for the next release



IP Issues

- All plugins contain appropriate about and license files
- IP process followed
- (Automatic) IP Log available at

http://www.eclipse.org/projects/ip_log.php?projectid=modeling.emft.eef

- Released under the terms of the EPL

Project Plan



- <http://www.eclipse.org/projects/project-plan.php?projectid=modeling.emft.eef>
- Future developments
 - Integration of the EMF Databinding framework
 - Generation of the EMF.Edit classes with Acceleo
 - Generation of automated tests with SWTBot
 - Documentation, examples and tutorials improvements