

2020-12

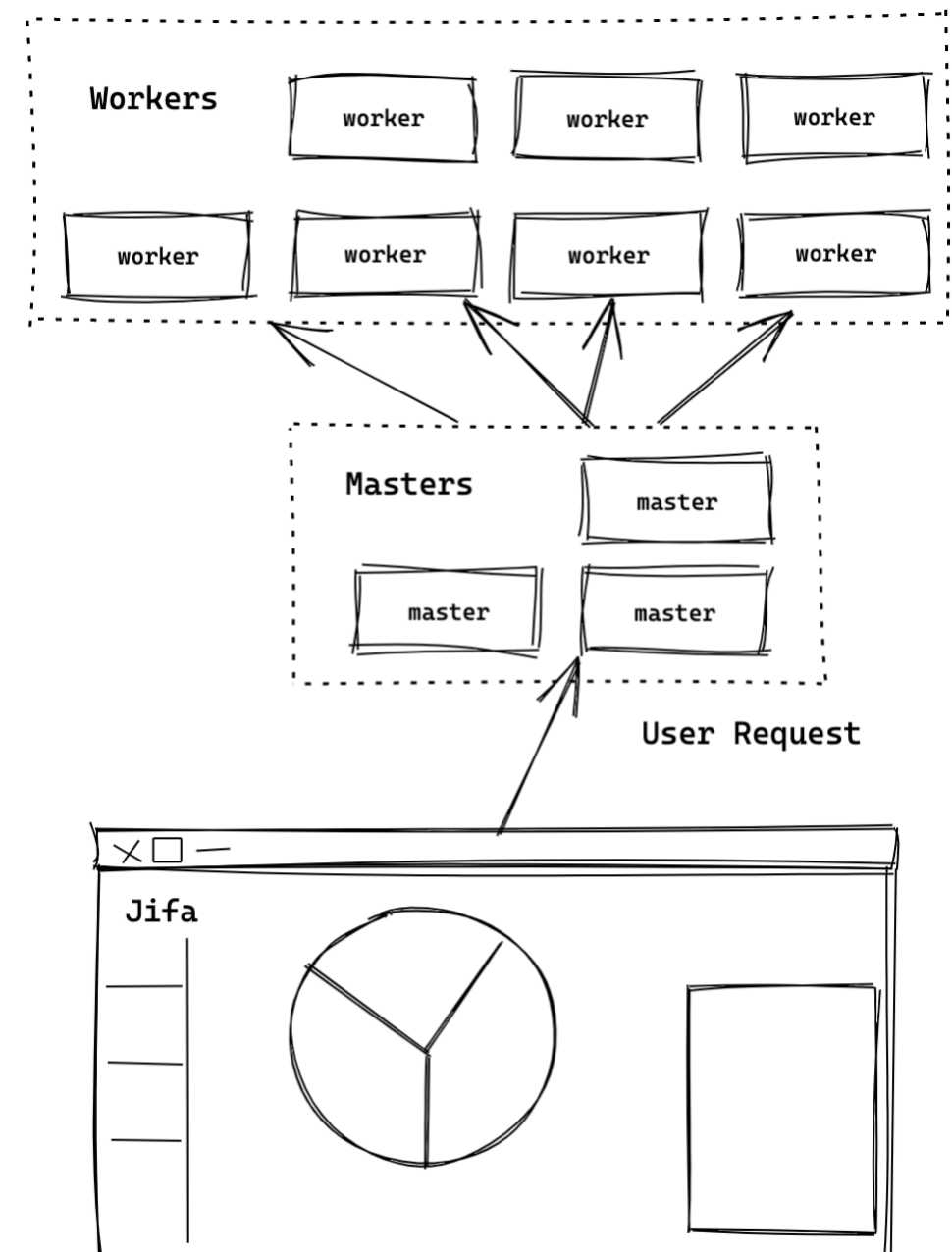
ECLIPSE JIFA

AGENDA

- New Features
- Release Cycle
- Discussion

MASTER (PUBLISHED)

- The master is used to manage worker machines and process user requests, etc.
- The worker is the real guy who does things(parsing/analyzing), worker could run as a standalone application but master can not.
- Feature:
 - Retire jobs
 - Disk clean
 - Authorization
 - User Worker
 - ...

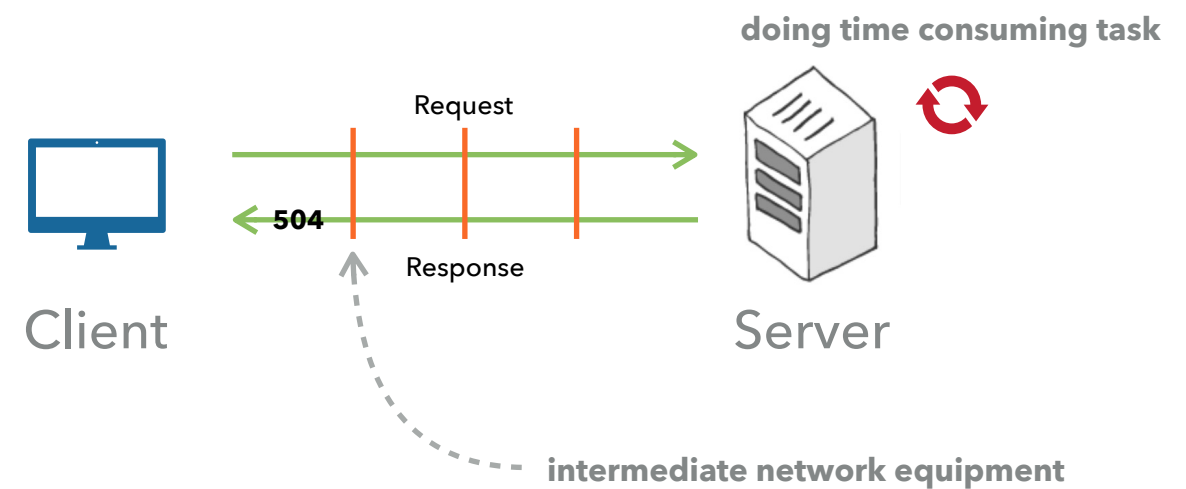


RICHER HEAP DUMP ANALYSIS ABILITY (WIP)

- Goals
 - Covering 70% of the functions of MAT
- Features
 - Top Consumer report
 - Leak Identification
 - Query/Sort/Group By/Filter/Merge
 - ...

STOMP PROTOCOL SUPPORT (WIP)

- Problem
 - HTTP Timeout
- Solution
 - Stomp / WebSocket
 - progress notification



RELEASE CYCLE

- An incubator release every quarter
 - 2021-3
 - 2021-6
 - 2021-9
 - 2021-12

THANK YOU