



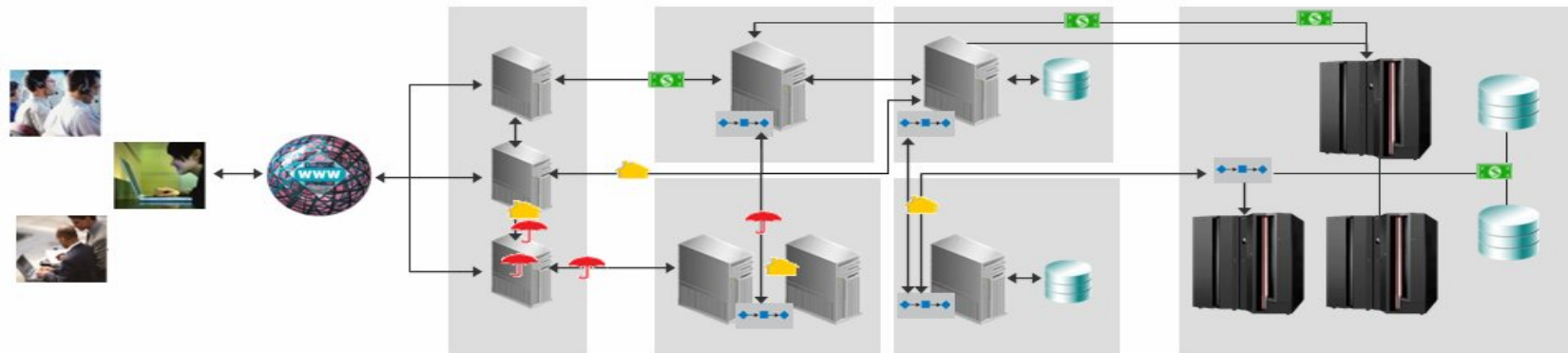
“COSMOS”
Community Systems Management Open Source

Mark Weitzel ([weitzelm is at us.ibm.com](mailto:weitzelm@us.ibm.com))

Toni Drapkin ([drapkin is at us.ibm.com](mailto:drapkin@us.ibm.com))

Challenges of IT Systems Management

Today's applications offer flexibility for business but introduce management challenges ...



“How do we coordinate problem resolution across all parts of the organization?”

“How can we minimize the disparate information we collect?”

“How can we instrument our systems?”

“How can we share resource descriptions in a consistent manner?”

“What industry standards can be applied to help solve the problems?”

COmmunity Systems Management Open Source*

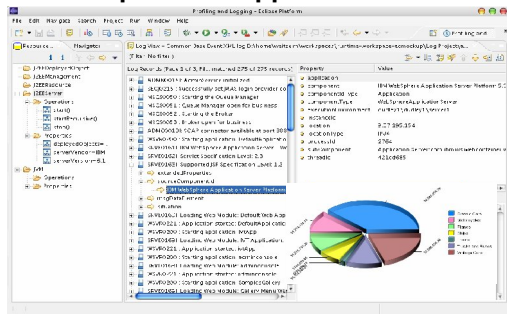
■ **COSMOS**

- Built upon the Eclipse Platform, the COSMOS project intends to develop generic, extensible, standards-based components for a tools platform upon which software developers can create specialized, differentiated, and inter-operable offerings of tools for system management
- The framework will exploit standards-based services for monitoring, and modeling of enterprise resources, applications, and workloads
 - COSMOS will facilitate the next evolutionary move for systems management
 - COSMOS will define the common assets needed in a platform for vendors to derive immediate benefit and in turn provide higher value in their own offerings
 - COSMOS will facilitate a migration to a common and open standards driven set of components
- In accordance with Eclipse process the COSMOS project will incubate following the guidance and supervision of the Eclipse Technology PMC
 - Expectation is COSMOS will graduate to a top level Eclipse project in March 2007 along with the GA of release 1.

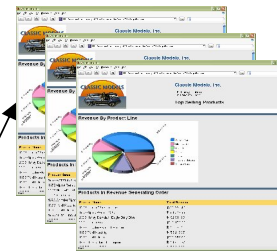
*COSMOS is a proposed name and will likely change in the future

Monitoring User Interface

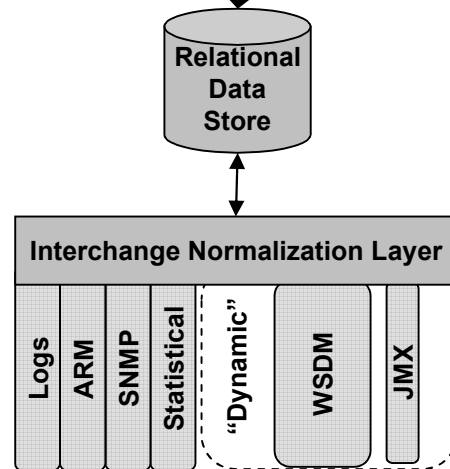
Eclipse RCP Application



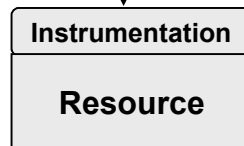
Web UI w/static BIRT reports



Data Collection & Server



Monitored Environment



- Basic user interfaces using normalized data
- Web based & RCP based clients
- Leverage BIRT report technology

- Relational data base used to store normalized collected data

- Build to Managed tooling for develop/test/debug of instrumentation

- Tooling to instrument standards based instrumentation, e.g. ARM, JMX, WSDM (and forthcoming WSUM). Dependent on TPTP tooling

- Non-disruptive way to support existing or new emerging management standards

- Protection of existing investment by bridging future and existing management instrumentation for hardware, OS and software

- Example might be consolidating WSDM and existing CIM instrumentation is a WSDM <-> CIM Bridge

- Resource Modeling work will provide reference implementation for Services Modeling Language (SML)

- Tooling for validation, editing of common model instances

- Consistent way to exchange information describing resources

COSMOS Project Milestones – 2006-2007

2006

- **September:**
 - Kickoff in Eclipse and gain agreement on project charter
 - Establish infrastructure within Eclipse

- **October:**
 - Begin incubation under guidance of Technology PMC
 - Begin work on
 - SML based tooling
 - Data collection & visualization
 - Build to Manage

2007

- **January:**
 - Review SML tooling prototype at SML interoperability conference with partners.

- **March:**
 - Graduate/Launch COSMOS as Top level project
 - COSMOS Release 1 Availability
 - SML based tooling
 - Data collection & visualization

- **June:**
 - COSMOS release 1.5 Availability
 - Monitor UI
 - Remainder of Data Collection
 - Additional SML tooling updates

- **November & December:**
 - Tbd

Initial Community

The following companies are helping to shape the project and may contribute committers to get the project started:

- IBM (www.ibm.com)
8+
- OC Systems (www.ocsystems.com)
- GroundWork (www.groundworkopensource.com)
- Cisco (www.cisco.com)
- Intel (www.intel.com)
- Compuware (www.compuware.com)
- HP (www.hp.com)